

ΓΤΠΙ-P004-16-01-F-0311

FTP-Service

DESCRIPTION of FTP- CUSTOMER CuteFTP

DESCRIPTION of FTP- CUSTOMER CuteFTP

Definitions

FTP-server – remote computer, which allows services of files storing and transmission, supports files transmission protocol FTP.

FTP-customer – the programme, which realizes the FTP functions.

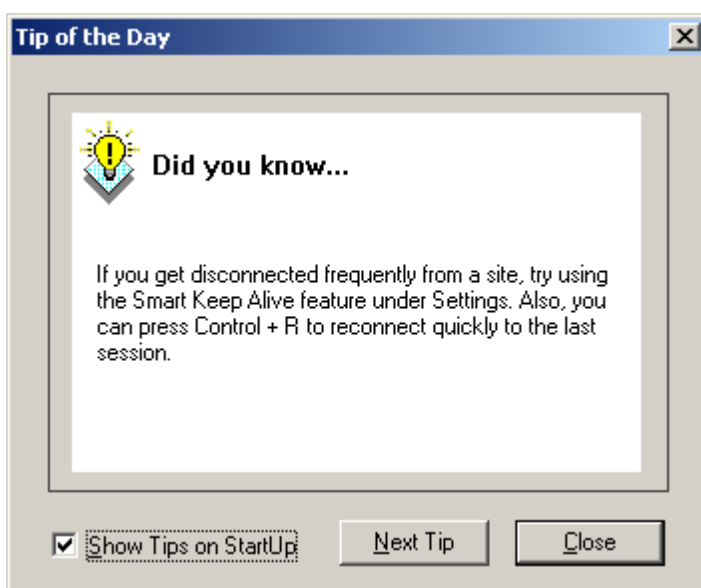
Attention: This description presumes that the connection with the GlobalTel access server (service 123) has been set up.

Attention: only the minimum of **CuteFTP** settings is described herein. To learn more please use the built-in HELP system.

Connection setting with FTP-server with help of Wizard of settings.

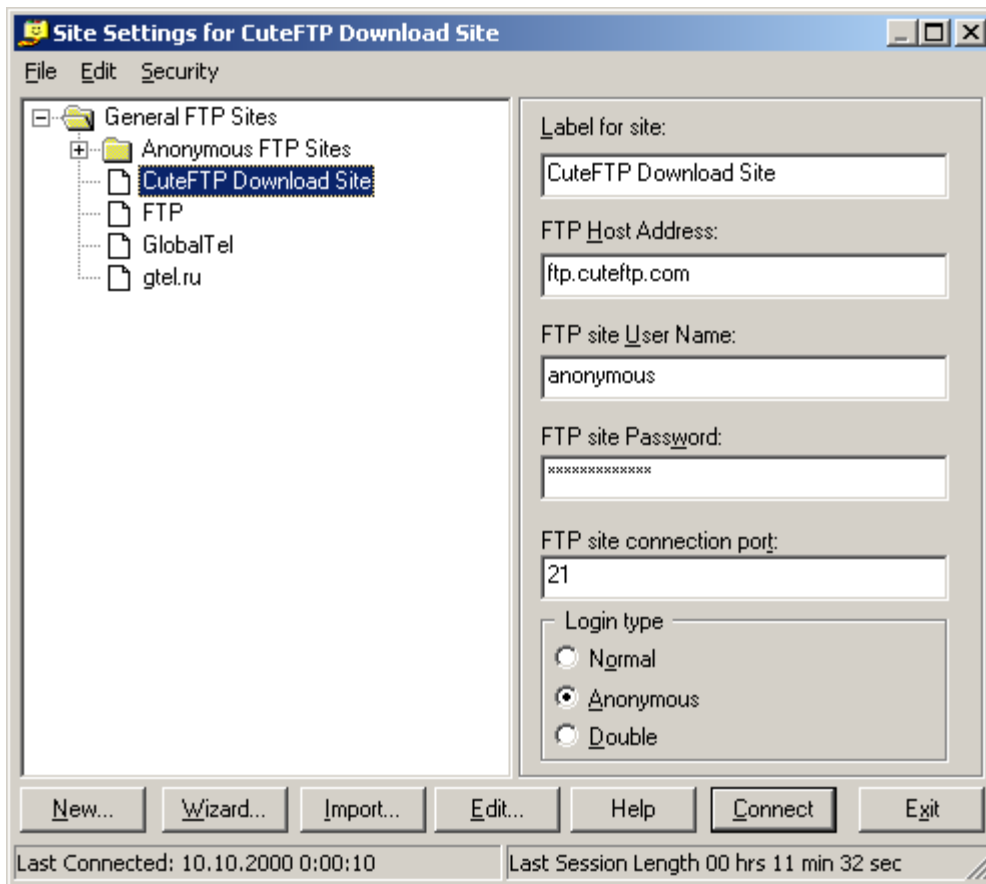
After the first launch of **CuteFTP** you will see the *Tips of the day* window, which has useful advice on work in the programme. If you do not want the window to appear in future click on the tick *Show Tips on StartUp* (Fig.1). to remove it. Close the window by pressing Close.

Fig. 1.



Now you can see the *Site Setting for FTP* (Fig.2) window. In order to set the connection with GlobalTel FTP-server press Wisard...

Fig.2.



The first window of the Wizard of setting (Fig.3) contains the list of certain Internet SPs. Keep the default setting (Other) and move to another step by pressing Next>.

Fig.3.



Insert the name of new connection (Fig.4), Eg., GlobalTel's FTP Server, press Next>.

Fig.4.



Enter GlobalTel FTP-server domain name – ftp.gtel.ru, or its IP address – 217.107.46.10, press Next> (Fig.5).

Fig.5.



Enter your login and password (which are assigned by the Customer-Care Center of CJSC GlobalTel). If you do not want the password to be shown when the connection is being set up, click the *Mask password* (Fig.6) tick, press Next>.

Fig.6.



Select the file in your PC, where you will receive files from FTP-server. For this you may use the standard Windows dialogue pressing Browse... (Fig.7), press Next>.

Fig.7.



In the last window of the Wizard of settings you can set up the **CuteFTP** for automatic connection with FTP-server of GlobalTel, for this put the tick *Connect to this site automatically* (Fig.8), press (Finish).

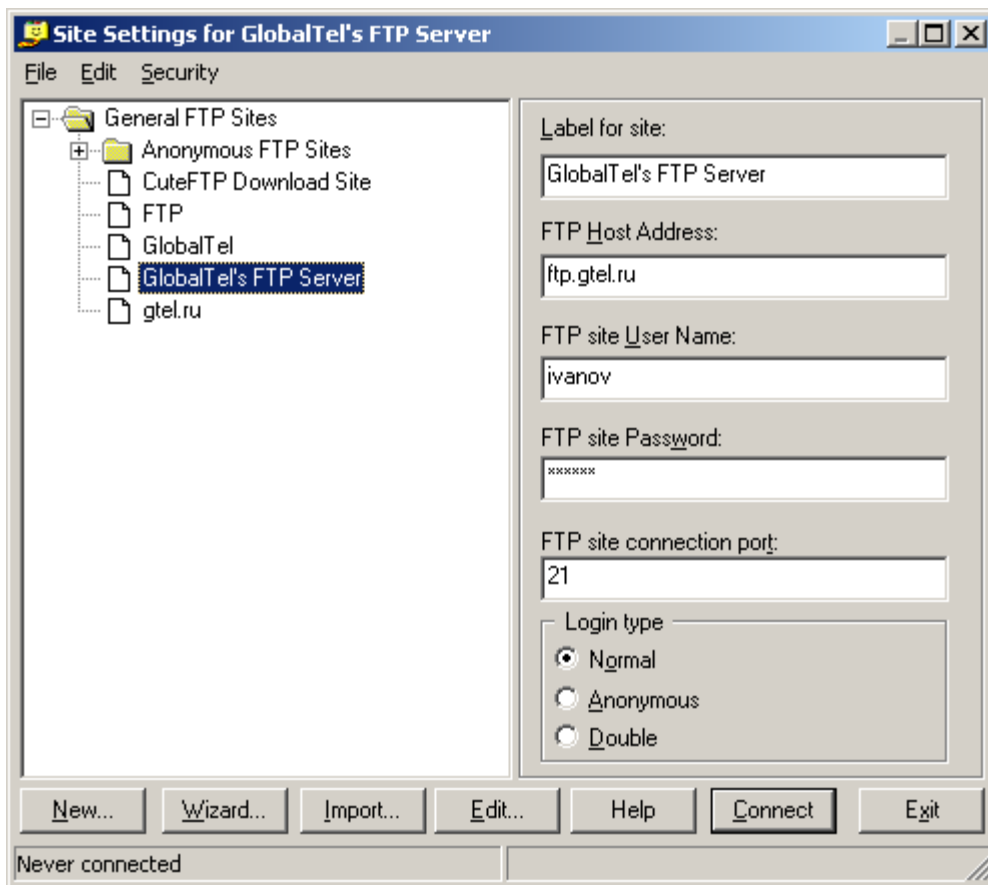
Fig.8.



Now there is GlobalTel's FTP Server in the window of available servers (Fig.9). Click on it and press Connect, if in the previous step you have set up the **CuteFTP** for the automatic connection to the server. The connection will start immediately after the Wizard of settings completes the setting.

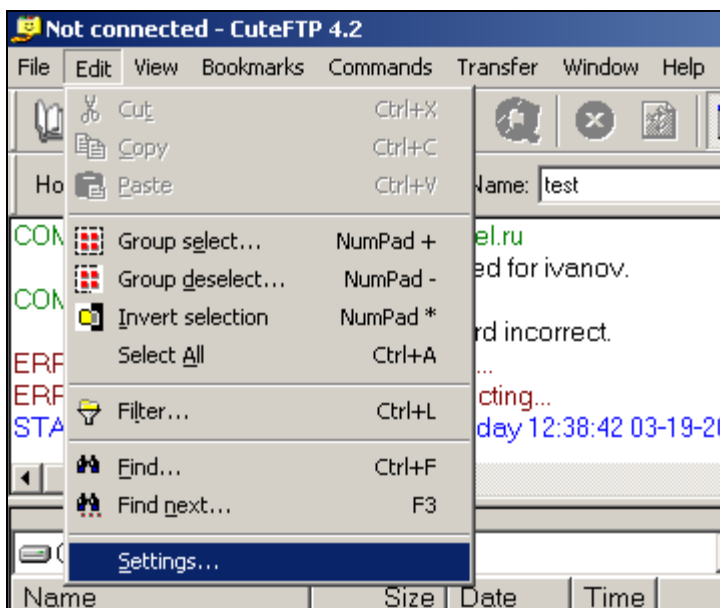
If you need to get the list of servers again, press F4.

Fig.9.



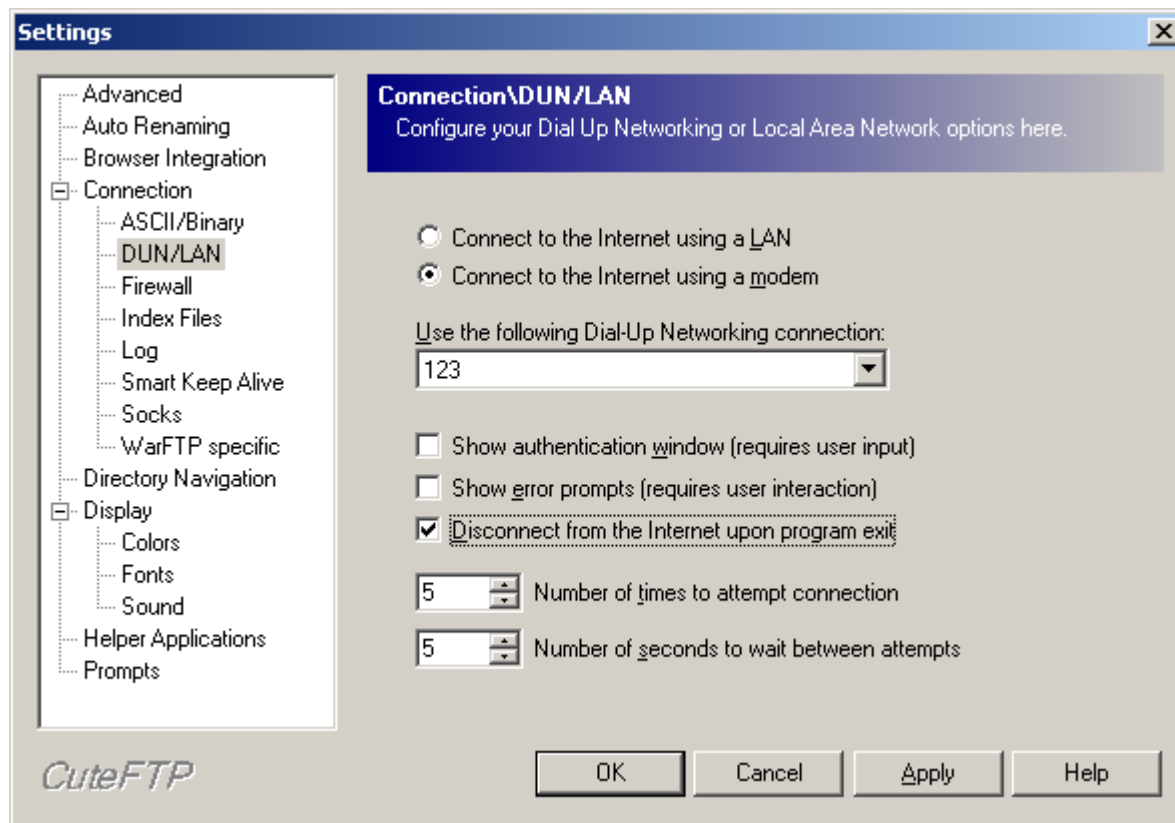
To ensure automatic connection with GlobalTel access server when launching CuteFTP ("123" service) select *Edit\Settings...*(Fig.10),

Fig.10.



In the left-hand part of the appeared window (Fig.11) select **Connection\DUN/LAN** , in the right-hand part mark *Connect to the Internet using a modem*, select form the pulldown list connection with the GlobalTel access server (in this case the connection is named “123”), press OK.

Fig.11.



You can also set **CuteFTP** for automatic disconnection from GlobalTel access server when the work in the programme is finished. For that tick on *Disconnect from the Internet upon program exit*, in the window *Numbers of times to attempt connection* you can set up the number of connection attempts with the access server in the event the first attempt was a failure, and in the window *Numbers of seconds to wait between attempts* – seconds between the attempts.

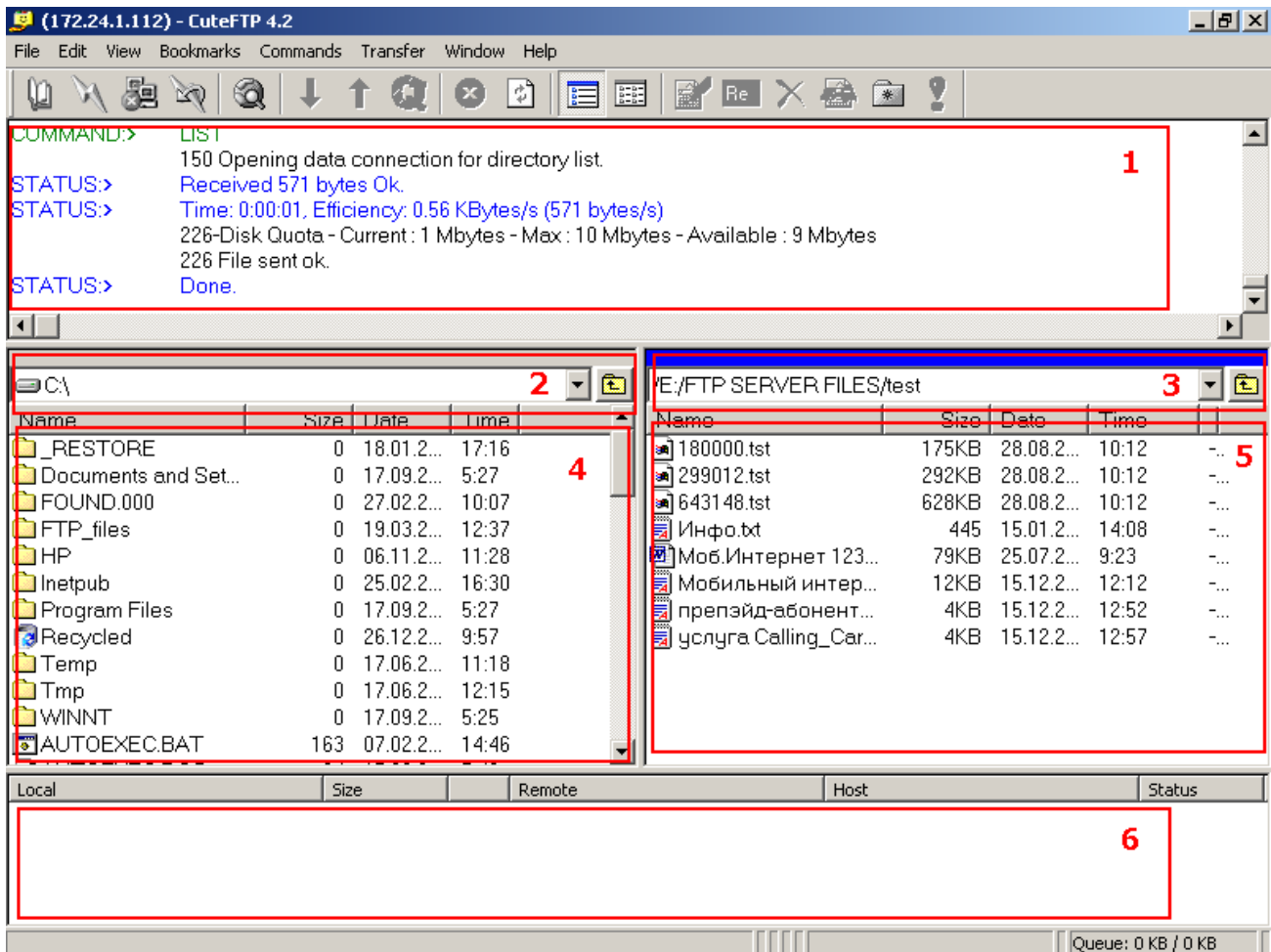
Assignment of zones in the working window

Fig.12 shows the CuteFTP major window

- In zone **1** the FTP protocol log is conducted; FTP-server and FTP-customer commands and their execution are indicated.
- In zone **2** the current directory on your PC disk is represented.

- In zone **3** your directory (file) on FTP-server is represented.
- In zone **4** the content of the current directory on your PC disk is represented.
- In zone **5** the content of your file on FTP-server is represented..
- In zone **6** the waiting list of files for transmission is represented..

Fig.12.



Work with the programme

If all settings are done correctly then after the programme's launch, after the connection is set up and FTP sessions are open, in zone **5** the content of your file in GlobalTel access server will be represented. Now you can copy files from the server to your PC simply by dragging them to zone **4**, rename, remove, create new directories, etc. Majority of such operations may be done by selecting the required item in the pulldown menu. For that click file in zone **5** with the right-hand button of the mouse

(Fig.13).

Fig.13.

