

# DT600 DT550

## Data Terminal for Telit Sat 600 / Sat 550

*Operation and Installation Manual*



**CONTENTS**

Contents \_\_\_\_\_ 1

Contents \_\_\_\_\_ 2

1. Introduction \_\_\_\_\_ 3

2. How it works \_\_\_\_\_ 3

3. System requirements \_\_\_\_\_ 6

4. Communication Software \_\_\_\_\_ 6

5. Installation with Windows 98 \_\_\_\_\_ 7

6. Installation with Windows NT \_\_\_\_\_ 11

7. Installation with Windows 2000 \_\_\_\_\_ 15

8. Making a data call \_\_\_\_\_ 21

## 1. INTRODUCTION

The data terminal DT600 or DT550 enables connection of your Globalstar/GSM Telit Sat 600 or Sat 550 mobile phone to a portable computer, for data transmission both on GSM 900 MHz frequency mode and Globalstar satellite mode.

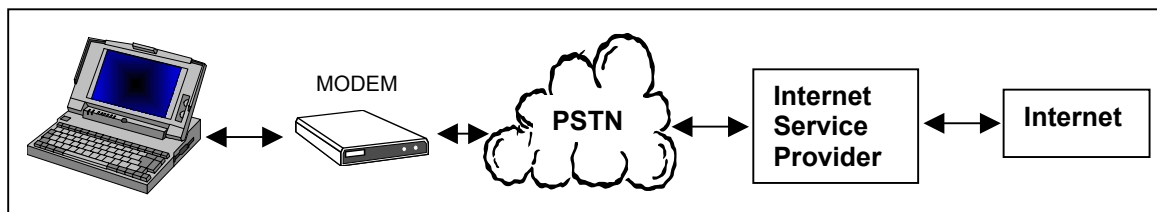
The mobile phone Telit Sat 600 (Sat 550) and DT600 (DT550) are to all effects an external modem.

To use this terminal, the relative driver must be installed (supplied on the CD ROM) on a computer running on an MS Windows(r) 98/NT/2000 operating system.

**Note for owners of a Sat 601 car kit:** on the Sat 601 (Sat 600 car kit) the data terminal DT600 is built into the product. This means that the portable computer can be connected directly to the Sat 601 car kit by means of a serial cable (not supplied in the Sat 601 pack) and, on completion of installation and configuration, the data transmission function can be used immediately.

## 2. HOW IT WORKS

The figure below illustrates the connection to the Internet via a standard modem.

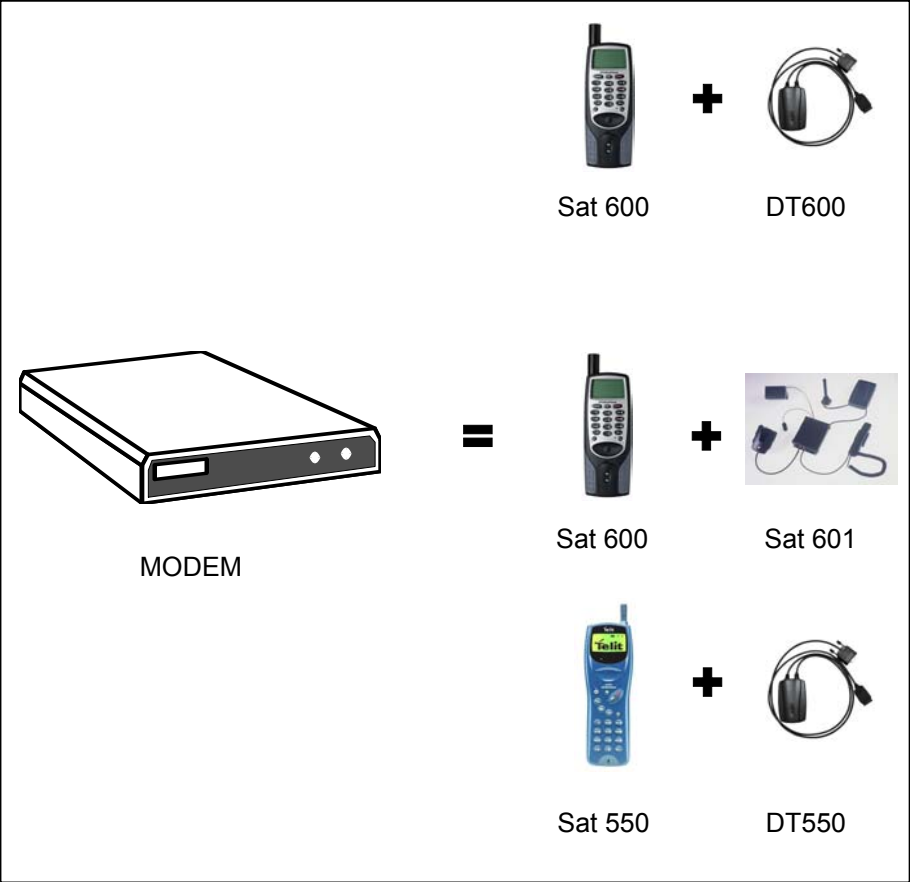


To hook up to the Internet you need to subscribe to an Internet Service Provider and your computer must be configured so that a specific model is associated with that connection along with a specific telephone number (that of the Internet Service Provider).

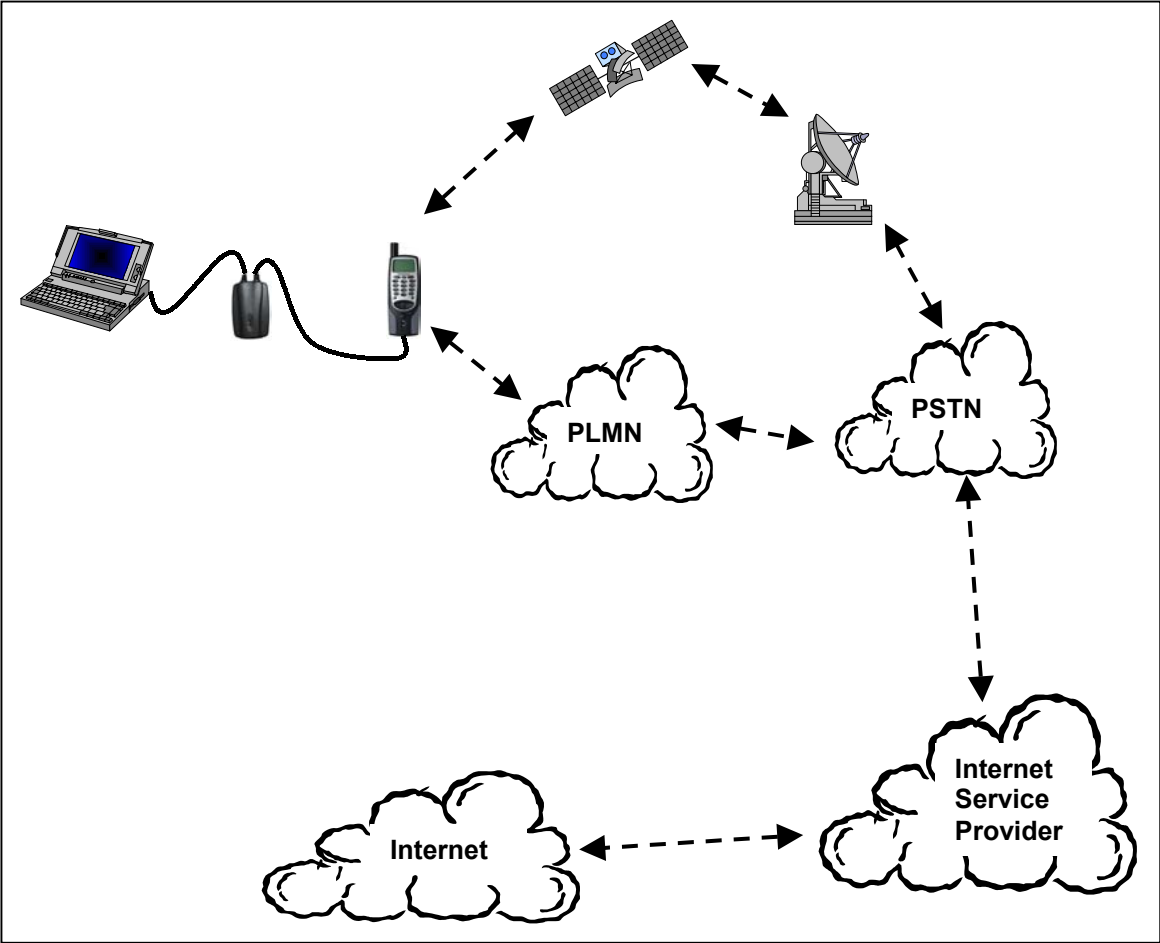
In the same way the Sat 600 (Sat 550) phone, the DT600 (DT550) and the Sat 601 car kit will be detected by your computer as an external modem.

Your computer will therefore be configured to associate a connection to the Internet with this modem.

The figure below shows the possible combinations for using the data transmission function both in GSM 900 MHz mode and Globalstar satellite mode.



The figure below shows the Internet connection via the telephone Telit Sat 600 or Sat 550 (for the sake of simplicity only model Sat 600 is illustrated) both in GSM 900 MHz mode and Globalstar satellite mode.



#### **4. SYSTEM REQUIREMENTS**

The following are needed to use the Telit Data Kit:

- A computer with operating system Windows® 98, NT 4.0, or 2000, CD ROM drive and serial port.
- A SIM card enabled for data transmission services (contact your network operator or service provider).
- A Telit Sat 600 or Telit Sat 550 mobile phone with the software version 8.0.X or later.

#### **5. COMMUNICATION SOFTWARE**

To connect to the Internet, send and receive e-mails and transmit data from your computer, a data communication software is needed (Netscape Navigator, MS Internet Explorer, Eudora, MS Outlook).

Windows 98, Windows NT 4.0 and Windows 2000 contain various communication applications, such as HyperTerminal and Remote Access. These programs must be installed on your computer.

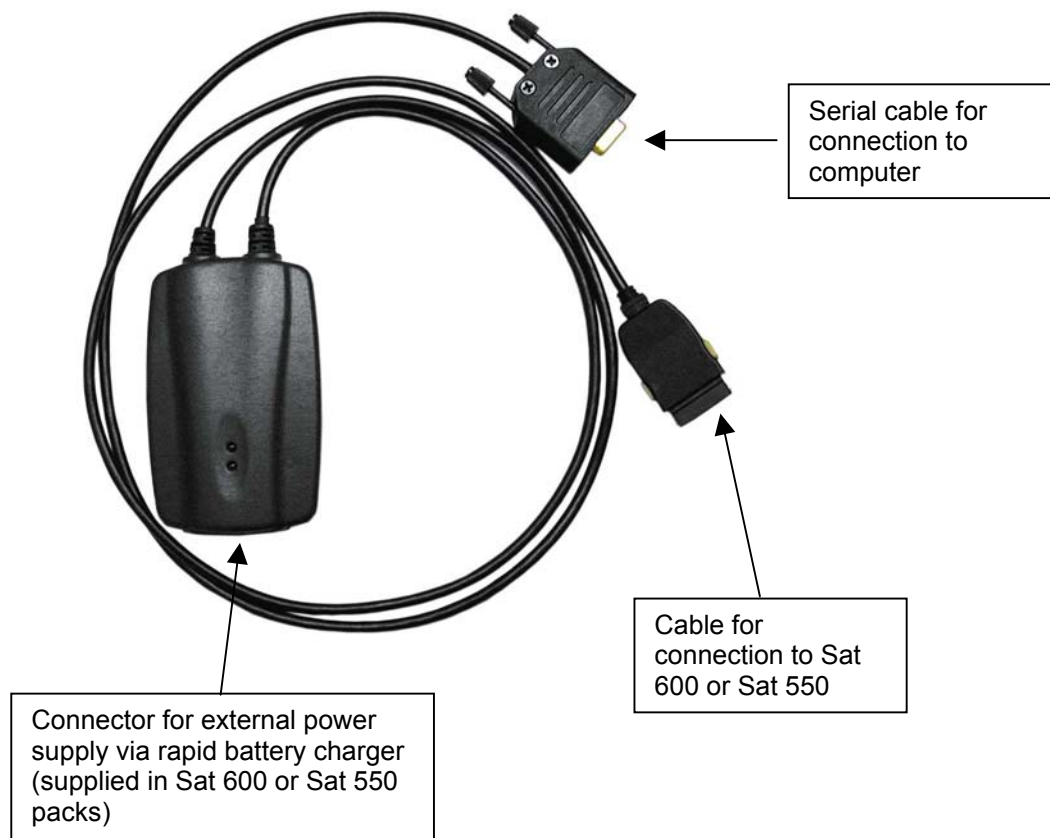
If these elements are not installed, check in the guide to your operating system for the relative installation procedure.

## 5. INSTALLATION WITH WINDOWS 98

This section provides the Telit DT600 or DT550 installation instructions on computers with Windows 98.

1. Close all applications on the computer.
2. Connect the serial cable of the DT600 or DT550 to a serial port on the computer (e.g. COM1).
3. With the phone switched off, connect the DT600 or DT550 to the connector at the base of the phone. Switch on the phone.

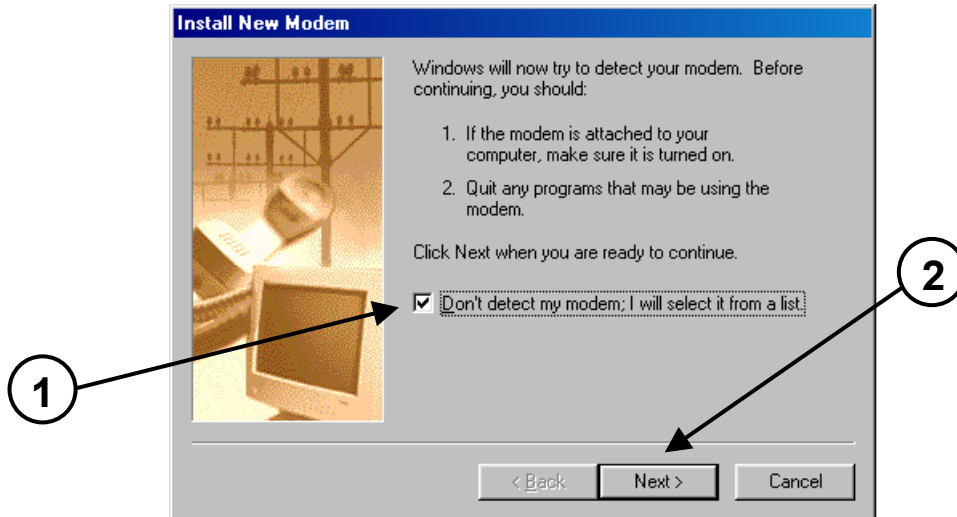
**NOTE:** if the battery on your Sat 600 or Sat 550 phone is not completely charged, connect the DT600 or DT550 to an external power socket. For this purpose use exclusively the rapid battery charger supplied in the Sat 600 or Sat 550 pack.



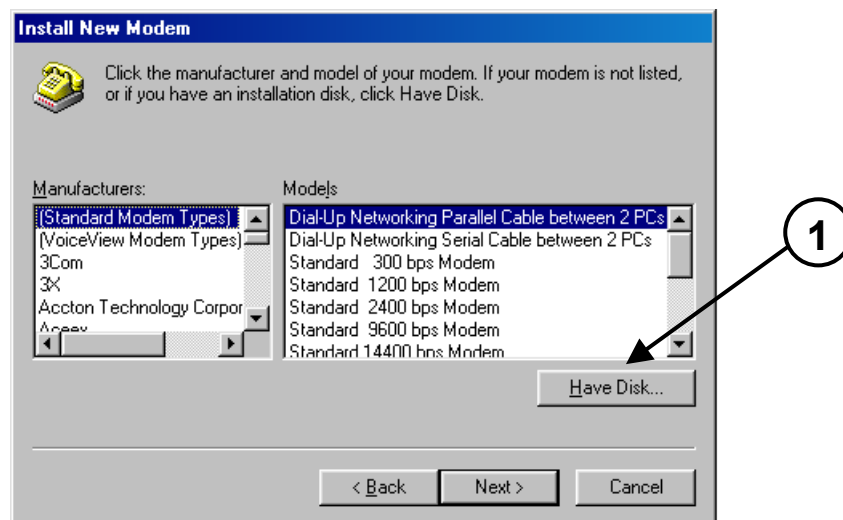
### For owners of the Sat 601

1. Close all applications on the computer.
2. Connect a serial cable (not supplied in the pack) to a serial port on the computer (e.g. COM1). Insert the Sat 600 in the car kit.
3. With the car kit switched off, connect the other end of the serial cable to the relative port on the auxiliary unit (see manual for Sat 601). Switch on the car kit.

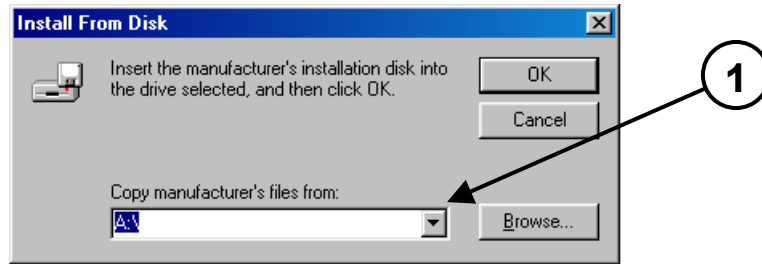
4. Select **Start > Settings > Control Panel (Avvio> Impostazioni >Pannello di Controllo)**.
5. Double click on **Modems** and select the tab **General (Generale)** to display the list of modems installed on your computer.
6. Select **Add... (Aggiungi...)** to install a new modem.
7. Check the box **“Do not detect my modem; I will select it from a list” (“Non rilevare il modem, selezionarlo successivamente”)**, and click on Next >.



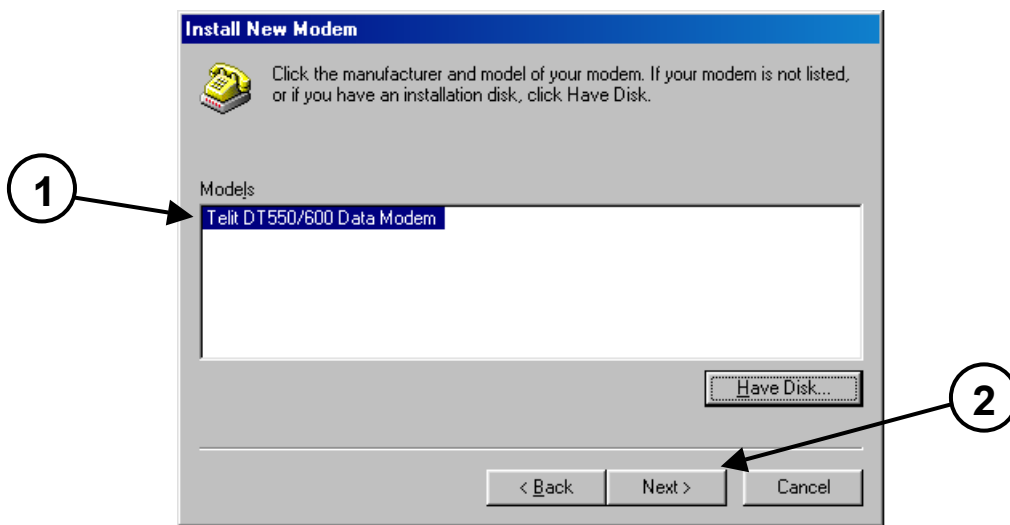
8. Click on **Have disk... (Disco driver)**



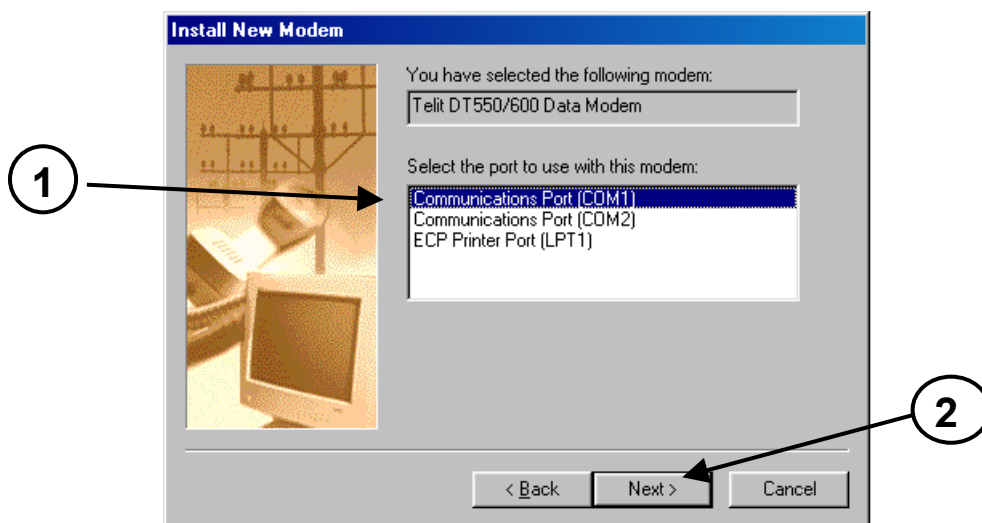
9. Select from Browse the part of hard disk where is contained the DT600.inf file (e.g. C) and then press OK.



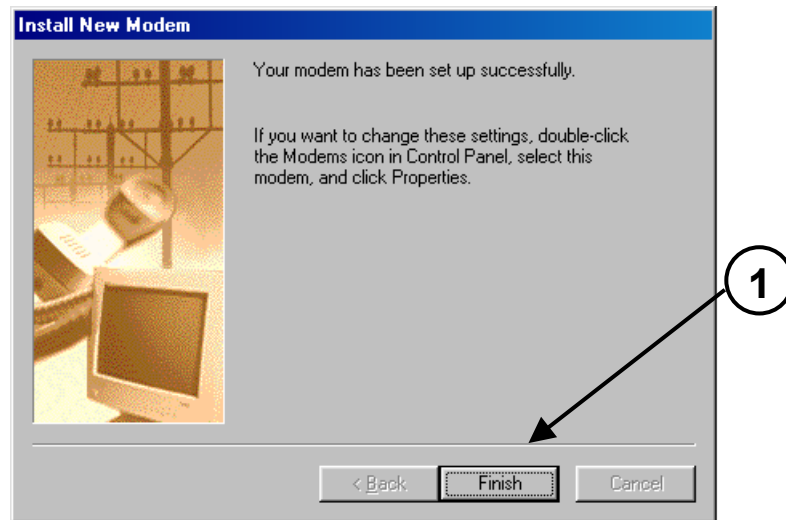
10. In the window "install new modem", select "**Telit DT550/600 Data Modem**" and click on **Next > (Avanti >)**.



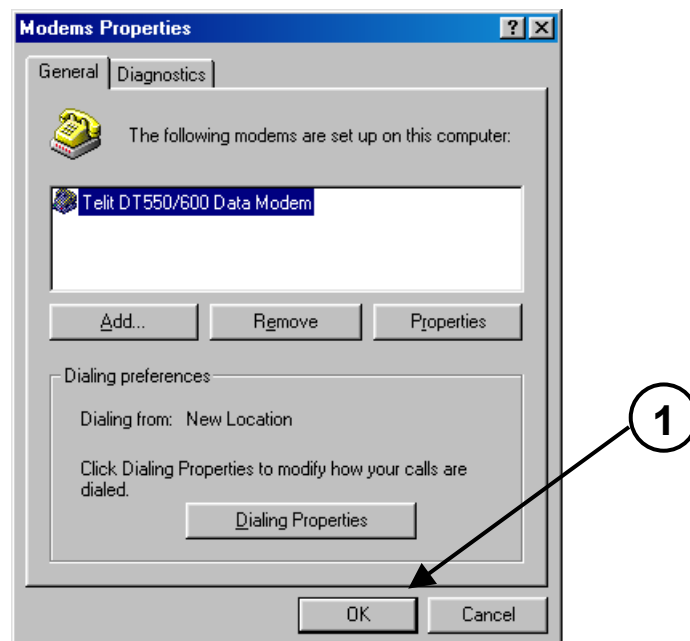
11. Select a communication port (COM port) not used (e.g. COM1), and click on **Next > (Avanti >)**. This port must be used to connect the DT600 or DT 550.



12. Click on **Finish (Fine)**.



13. Click on **Close (Chiudi)** or **OK** to exit the modem properties window.



14. The installation of Telit DT600 or DT550 is complete.

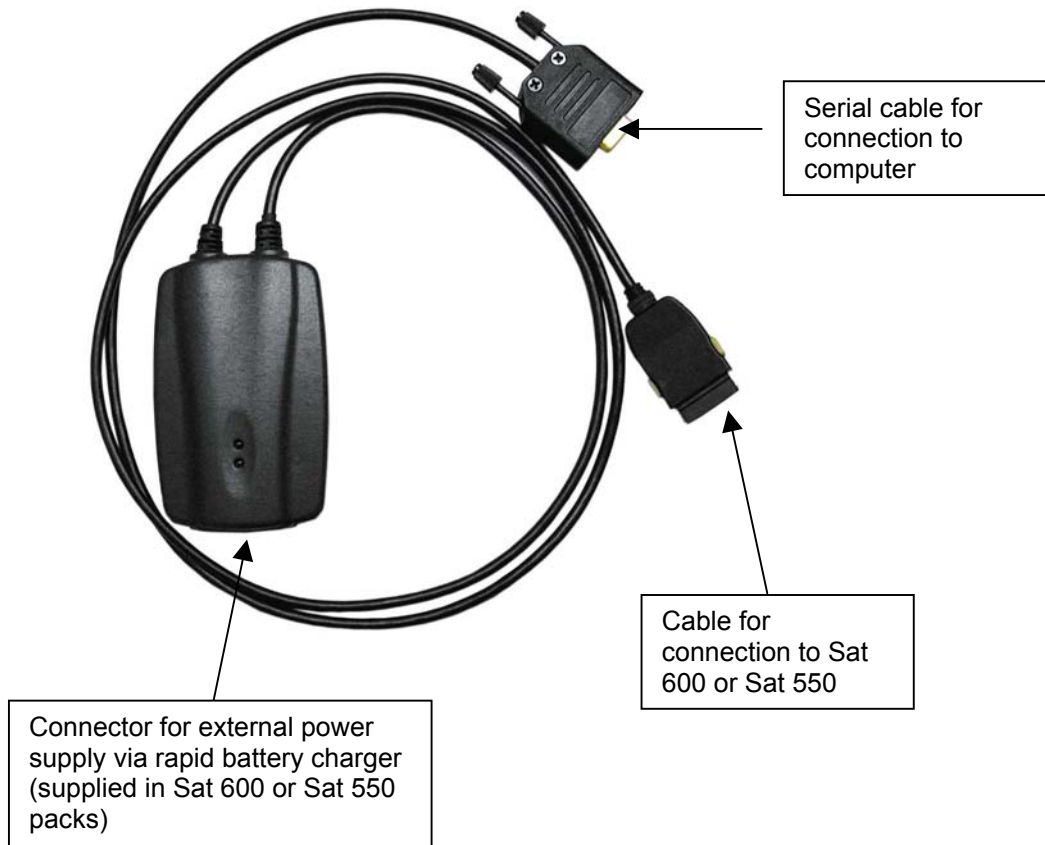
**NOTE:** to enable connection to the Internet a subscription to an Internet Service Provider is required, who will provide all instructions required to create a new connection via **Remote Access (Accesso remoto)** (Start > Programs > Communications > Remote Access).

## 6. INSTALLATION WITH WINDOWS NT

This section provides the Telit DT600 or DT550 installation instructions on computers with Windows NT.

1. Close all applications on the computer.
2. Connect the serial cable of the DT600 or DT550 to a serial port on the computer (e.g. COM1).
3. With the phone switched off, connect the DT600 or DT550 to the connector at the base of the phone. Switch on the phone.

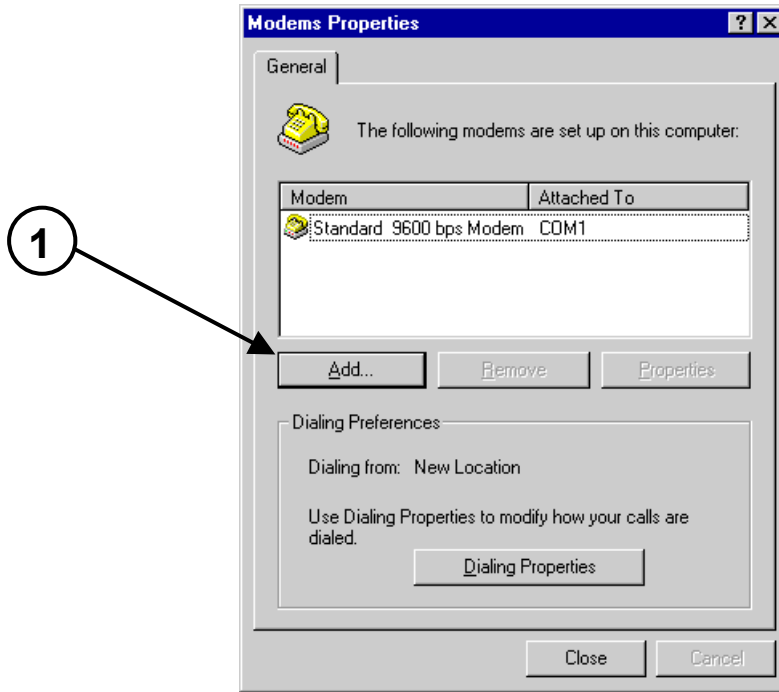
**NOTE:** if the battery on your Sat 600 or Sat 550 phone is not completely charged, connect the DT600 or DT550 to an external power socket. For this purpose use exclusively the rapid battery charger supplied in the Sat 600 or Sat 550 pack.



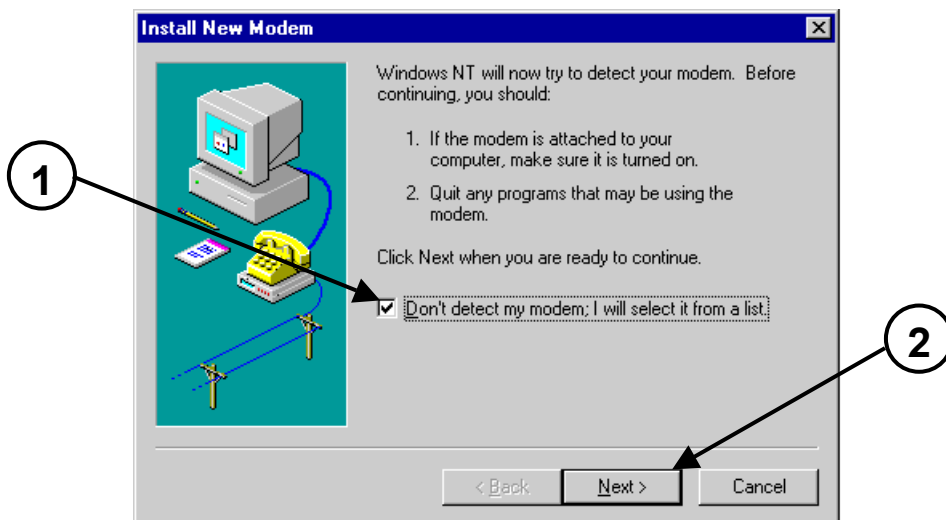
### For owners of the Sat 601

1. Close all applications on the computer.
2. Connect a serial cable (not supplied in the pack) to a serial port on the computer (e.g. COM1). Insert the Sat 600 in the car kit.
3. With the car kit switched off, connect the other end of the serial cable to the relative port on the auxiliary unit (see manual for Sat 601). Switch on the car kit.

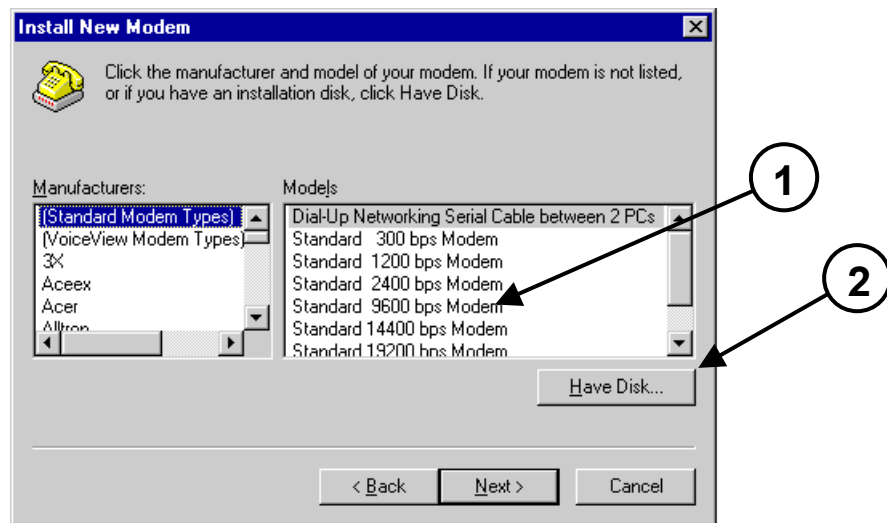
4. Select **Start > Settings > Control Panel (Avvio > Impostazioni > Pannello di Controllo)**
5. Double click on **Modems** and select the tab **General (Generale)** to display the list of modems installed on your computer.
6. Select **Add... (Aggiungi...)** to install a new modem. The following window is displayed:



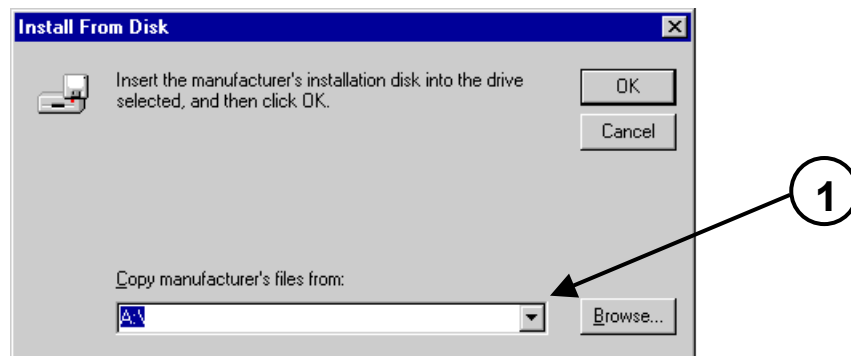
7. Check the box **“Do not detect my modem; I will select it from a list” (“Non rilevare il modem, selezionarlo successivamente”)**, and click on **Next > (Avanti >)**.



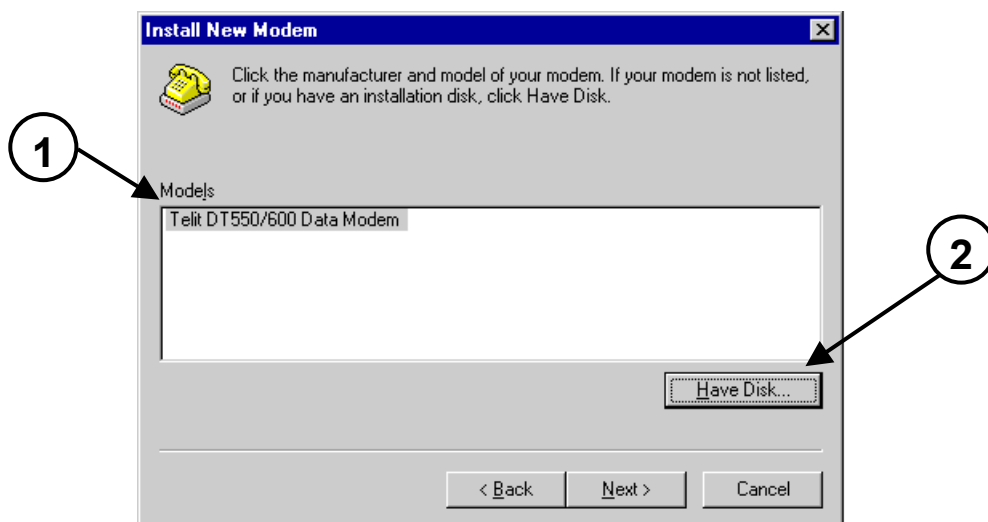
8. Click on **Have disk... (Disco driver...)**



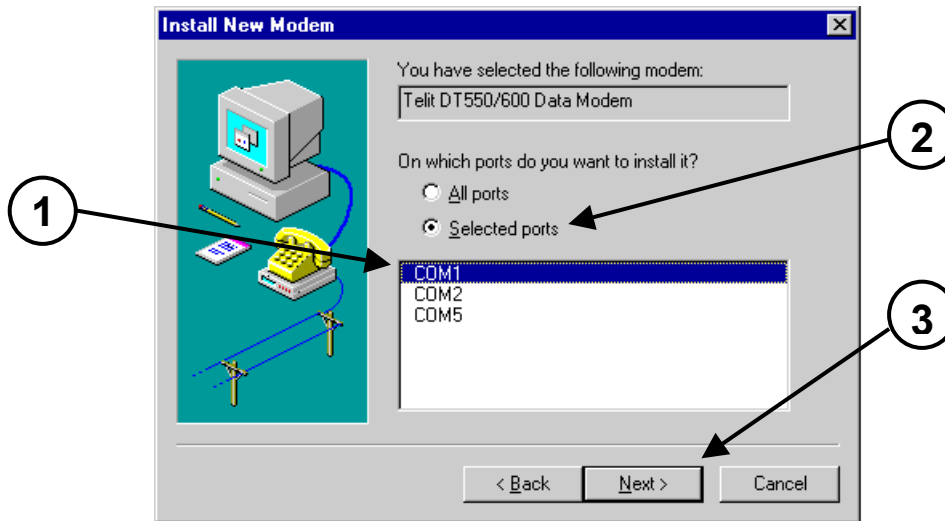
9. Select from Browse the part of hard disk where is contained the DT600.inf file (e.g. C) and then press OK.



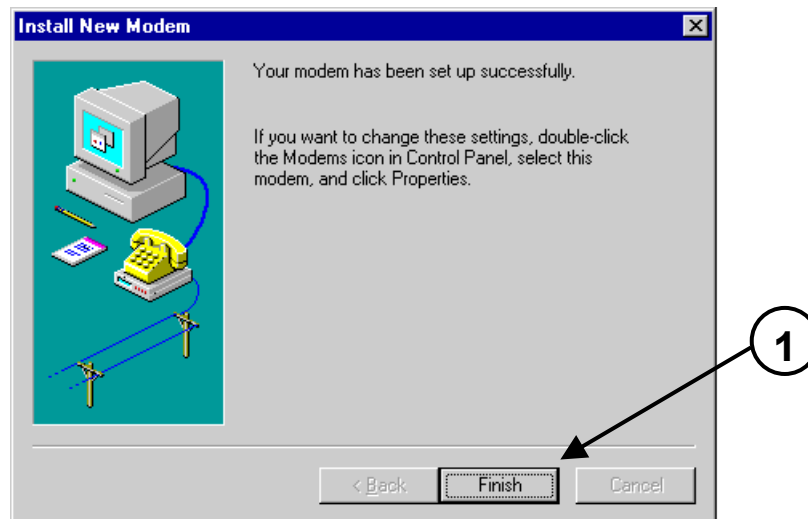
10. In the window "install new modem", select "**Telit DT550/600 Data Modem**" and click on **Next > (Avanti >)**.



11. Click on **“Selected ports”** (**“Porte selezionate”**) and select a port available (e.g. COM1). Click on **Next >** (**Avanti >**).



12. Click on **Finish** (**Fine**) to close the Install New Modem window.



13. Click on **Close** or **OK** to exit the modem properties window.

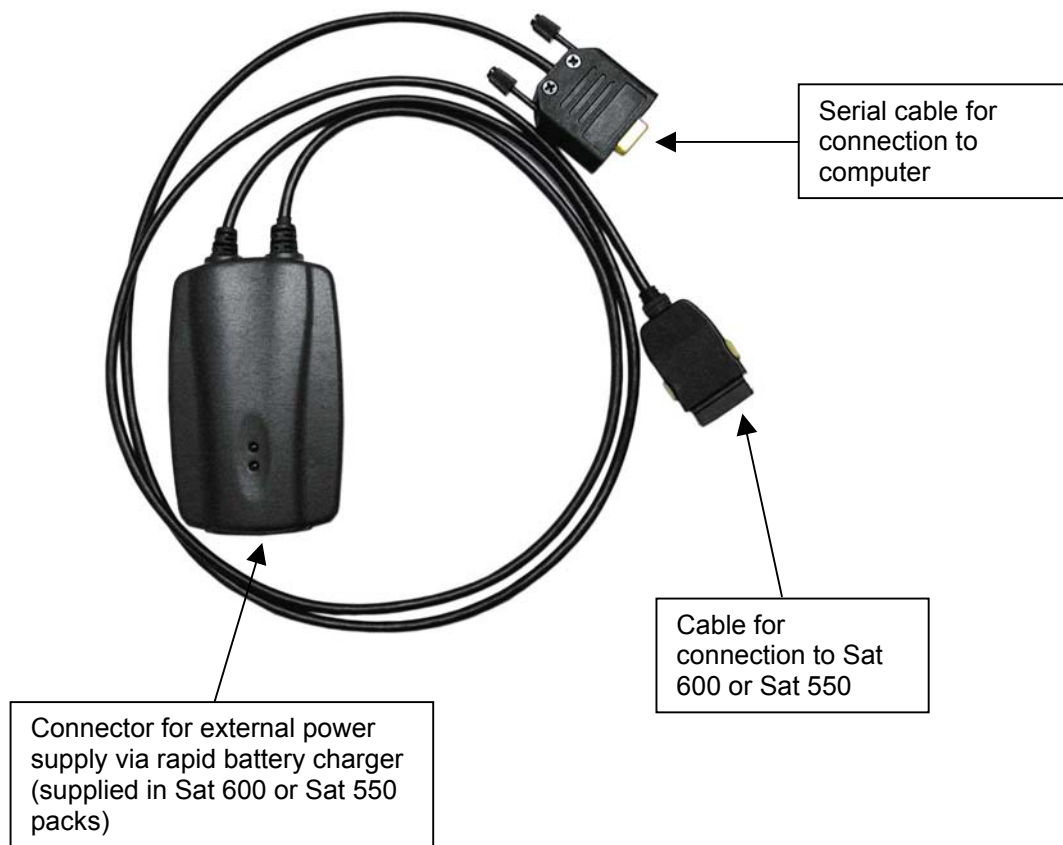
**NOTE:** to enable connection to the Internet a subscription to an Internet Service Provider is required, who will provide all instructions required to create a new connection via **Remote Access** (Start > Programs > Communications > Remote Access).

## 7. INSTALLATION WITH WINDOWS 2000

This section provides the Telit DT600 or DT550 installation instructions on computers with Windows 2000.

1. Close all applications on the computer.
2. Connect the serial cable of the DT600 or DT550 to a serial port on the computer (e.g. COM1).
3. With the phone switched off, connect the DT600 or DT550 to the connector at the base of the phone. Switch on the phone.

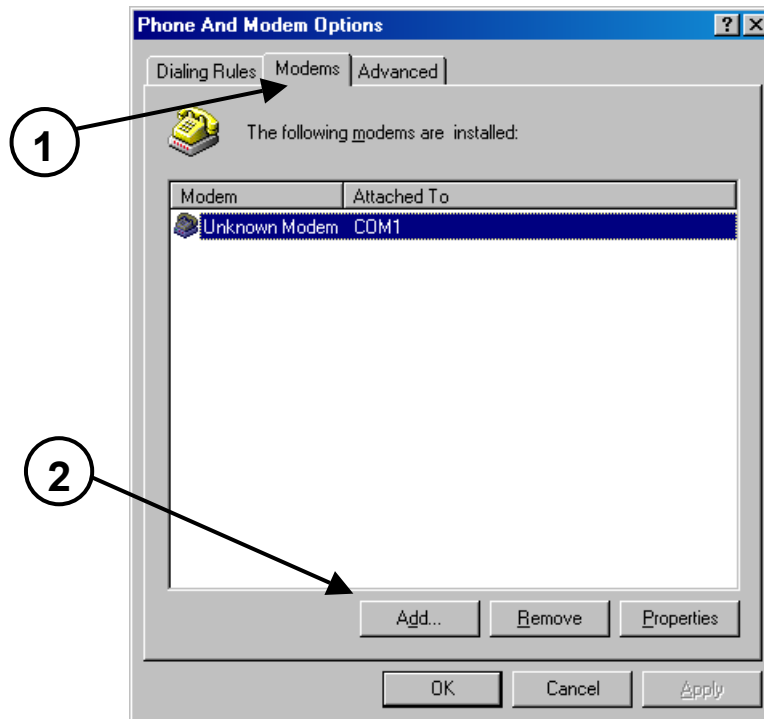
**NOTE:** if the battery on your Sat 600 or Sat 550 phone is not completely charged, connect the DT600 or DT550 to an external power socket. For this purpose use exclusively the rapid battery charger supplied in the Sat 600 or Sat 550 pack.



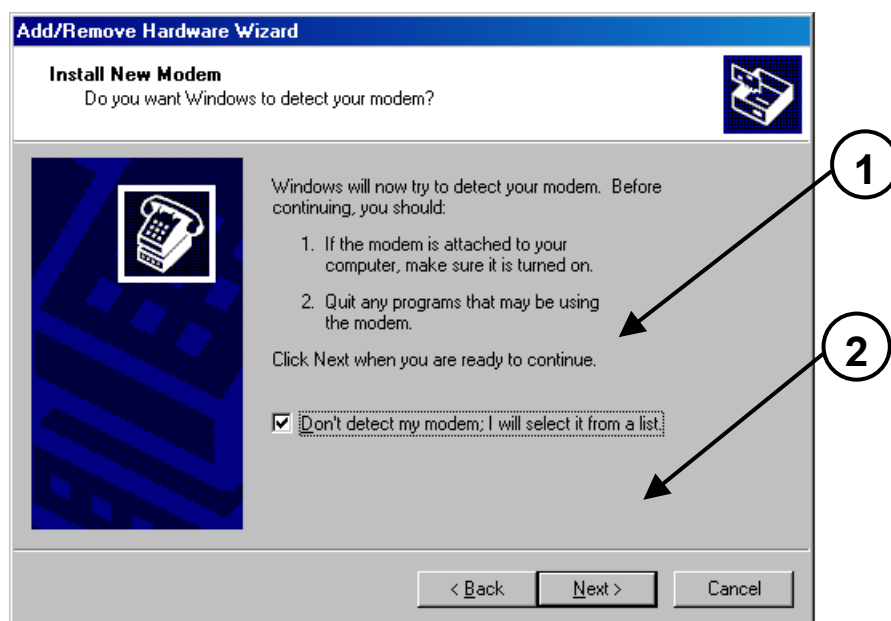
### For owners of the Sat 601

1. Close all applications on the computer.
2. Connect a serial cable (not supplied in the pack) to a serial port on the computer (e.g. COM1). Insert the Sat 600 in the car kit.
3. With the car kit switched off, connect the other end of the serial cable to the relative port on the auxiliary unit (see manual for Sat 601). Switch on the car kit.

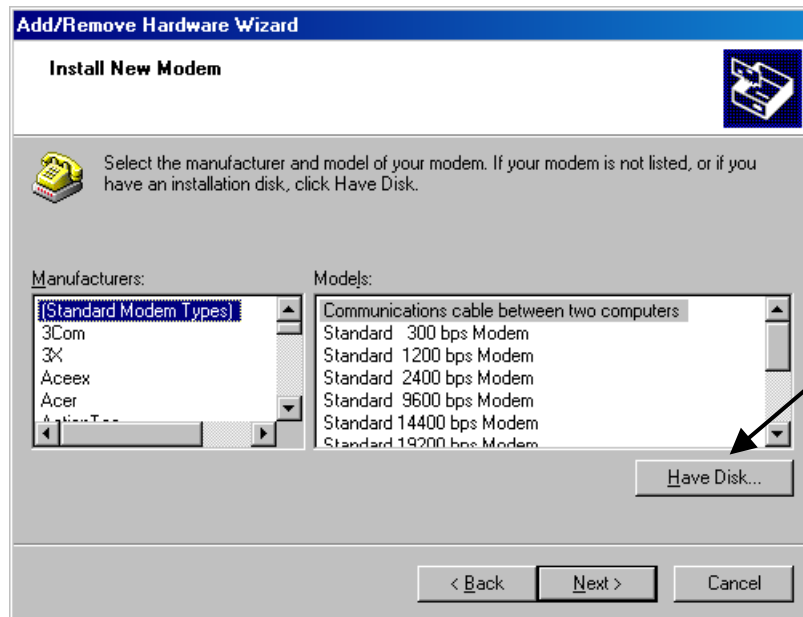
4. Select **Start > Settings > Control Panel (Avvio > Impostazioni > Pannello di Controllo)**.
5. Double click on **Phone and Modem (Telefono e Modem)** to open the phone and modem options window.
6. Select the tab **Modems** to display the list of modems installed on your computer. Click on **Add... (Aggiungi...)** to open the guide to installation of a new modem.



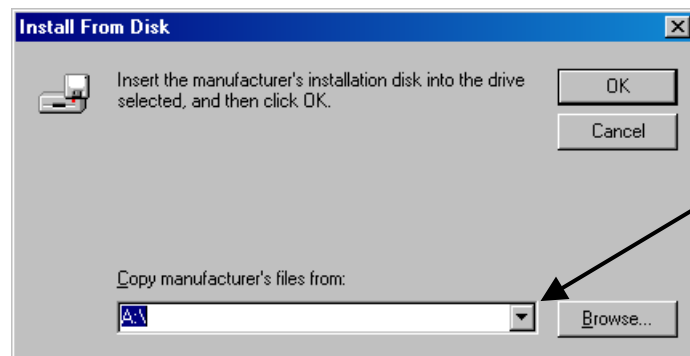
7. Check the box **“Do not detect my modem; I will select it from a list” ( “Non rilevare il modem, selezionarlo successivamente”)**, and click on **Next > (Avanti >)**.



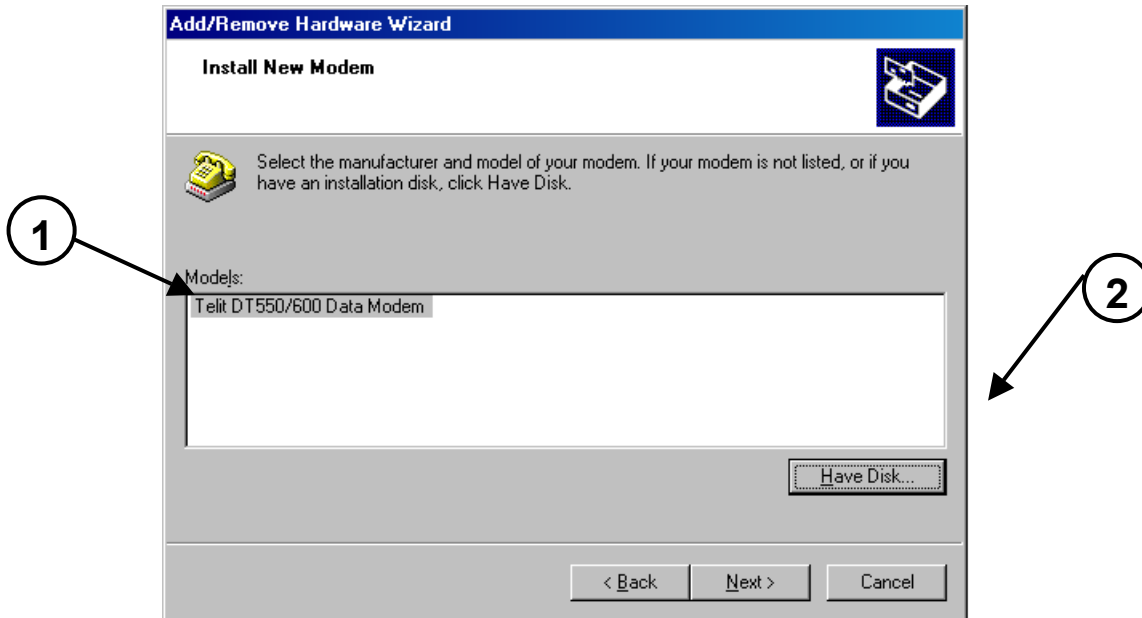
8. Click on **Have disk... (Disco driver...)**



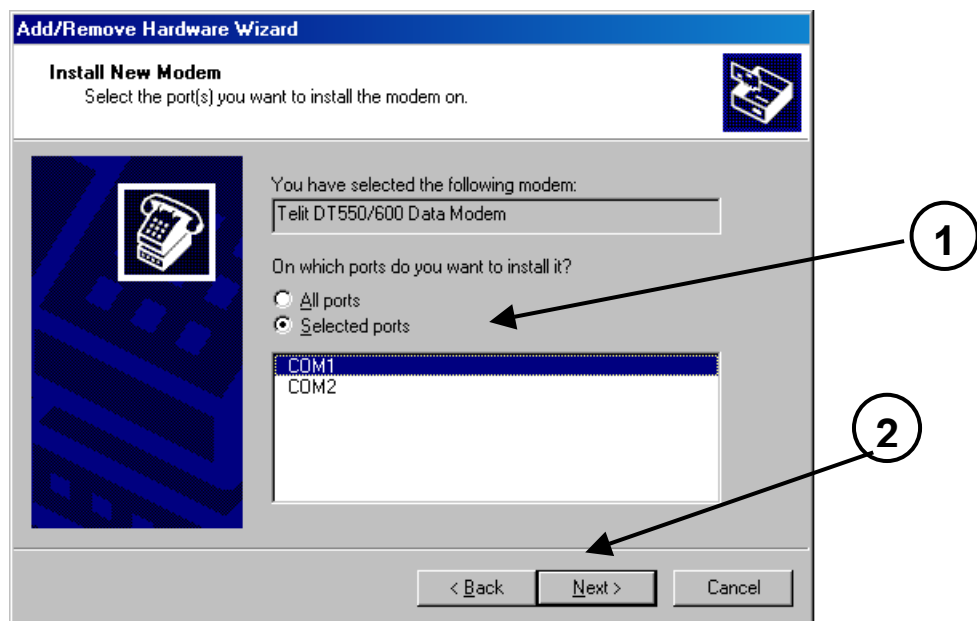
9. Select from Browse the part of hard disk where is contained the DT600.inf file (e.g. C) and then click OK.



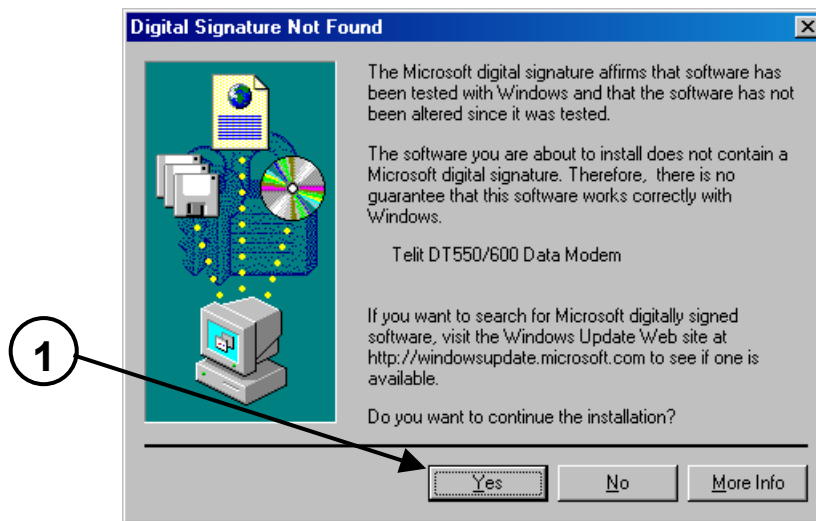
10. In the window “install new modem”, select “**Telit DT550/600 Data Modem**” and click on **Next >** (**Avanti**).



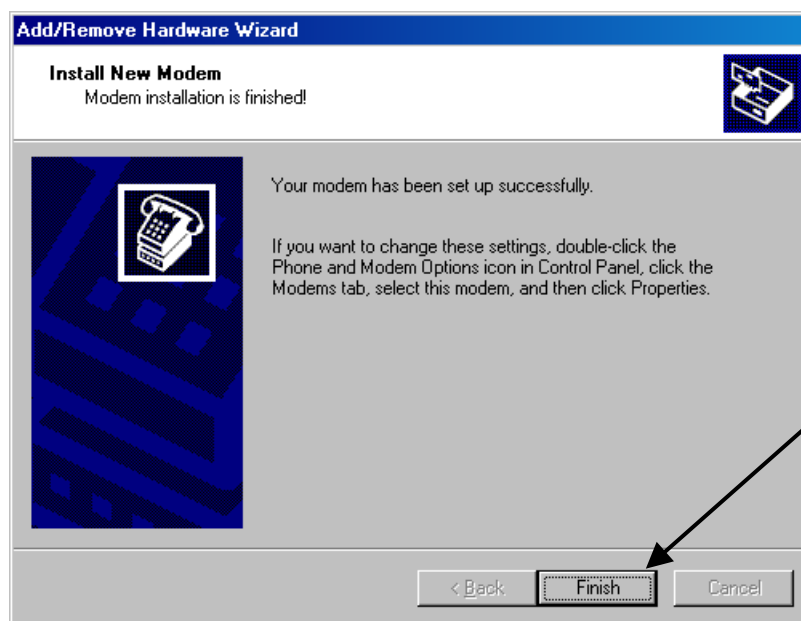
11. Click on “**Selected ports**” (“**Porte selezionate**”) and select a port available (e.g. COM1). Click on **Next >** (**Avanti >**).



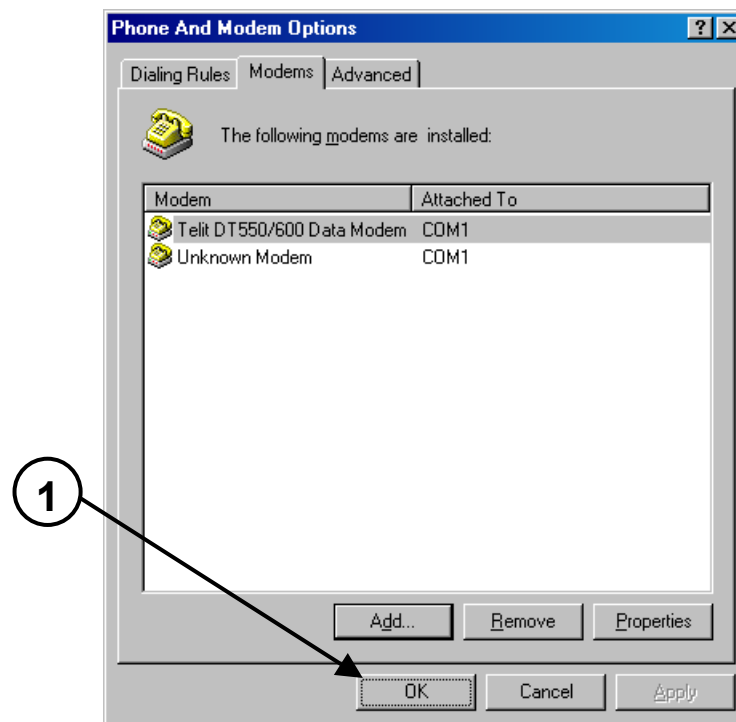
12. The following window is displayed. Click on **Yes (Si)**.



13. Click on **Finish (Fine)** to close the new modem installation window.



14. Click on **OK** to close the phone and modem options window.



**NOTE:** to enable connection to the Internet a subscription to an Internet Service Provider is required, who will provide all instructions required to create a new connection via **Remote Access** (Start > Programs > Communications > Remote Access) (Avvio > Programmi > Comunicazioni > Accesso Remoto).

## 8. MAKING A DATA CALL

1. Ensure that the phone Telit Sat 600 or Sat 550 is connected correctly to the DT600 or DT550 respectively and that the latter is connected to a serial port on your computer.

### For owners of Sat 601

1. Ensure that the auxiliary unit is connected correctly by means of a serial cable (not supplied in the pack), to your computer and that the Sat 600 is inserted in the car kit.

**NOTE:** Ensure that the serial port (COM) of your computer connecting the DT600, DT550 or car kit Sat 601 is not used by other applications. In this case the specific applications must be closed before making a data call.

2. In the event of a data call in Globalstar satellite, extend (Sat 600) or rotate (Sat 550) the satellite antenna completely so that it is directed upwards and ensure that there are no obstacles between the telephone and satellite which could reduce signal intensity. In the case of the Sat 601 ensure that the Sat 600 is correctly inserted in the car kit.
3. Switch on the Telit Sat 600 or Sat 550 or car kit. Wait until the telephone has registered onto the Globalstar satellite network or onto GSM 900 MHz.
4. Double click on the icon for data connection for Sat 600 or Sat 550 (created via remote access).

### In the case of Windows 98:

In the window **Dialup networking (Connetti a)** enter the user name and password used for access to your Internet Service Provider (or your own local network). Click on **Connect (Connetti)** so that the Telit Sat 600 or Sat 550 makes the call.

### In the case of Windows NT:

In the window **Remote Access (Accesso remoto)** select the required connection from the scroll window. Ensure that the telephone number is correct. Click on the key to make the call.

In the window displayed, enter the user name and password used to access your Internet Service Provider (or your own local network). Click on **Connect (Connetti)** so that the Telit Sat 600 or Sat 550 makes the call.

### In the case of Windows 2000:

In the connection window with the user name and password, click on the key to make the call.

5. When the call is made a window appears displaying the connection status (similar to that shown when making a call with a standard modem).
6. Once the connection is made a window is displayed for verification of the user name and password.
7. If authentication is confirmed the connection icon is displayed on the toolbar.
8. A communication application can now be opened (Internet Explorer, Netscape Navigator, MS Outlook, Eudora, etc.).